

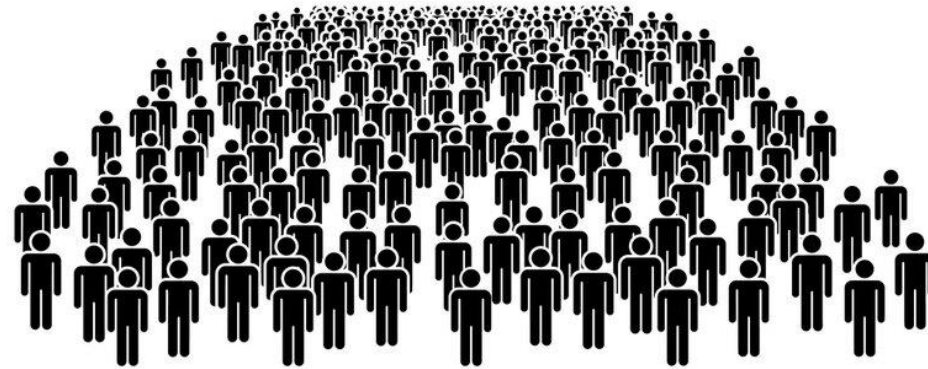


vVardis Technology and Products

The solution between
prophylaxis and invasive therapy

27 Apr 2023

Dr Silvia Scarmagnani



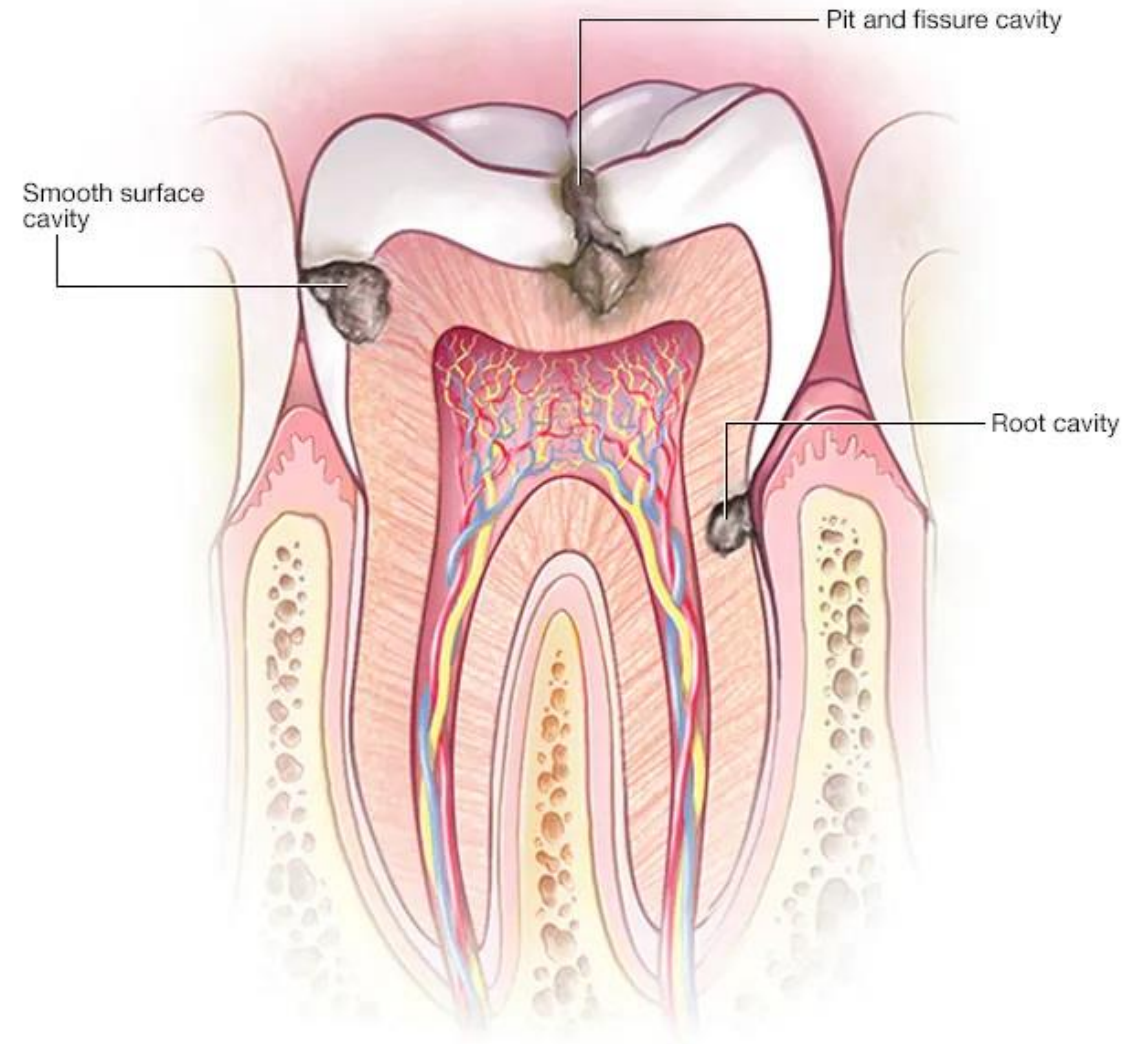
2.3 Billion

people suffer from tooth decay

(530 million children)

Cavities are permanently damaged areas in the hard surface of teeth.

Cavities, also called **tooth decay** or **caries**, are caused by a combination of factors, including **bacteria** in your mouth, frequent **snacking, sipping sugary drinks** and **bad oral hygiene**.

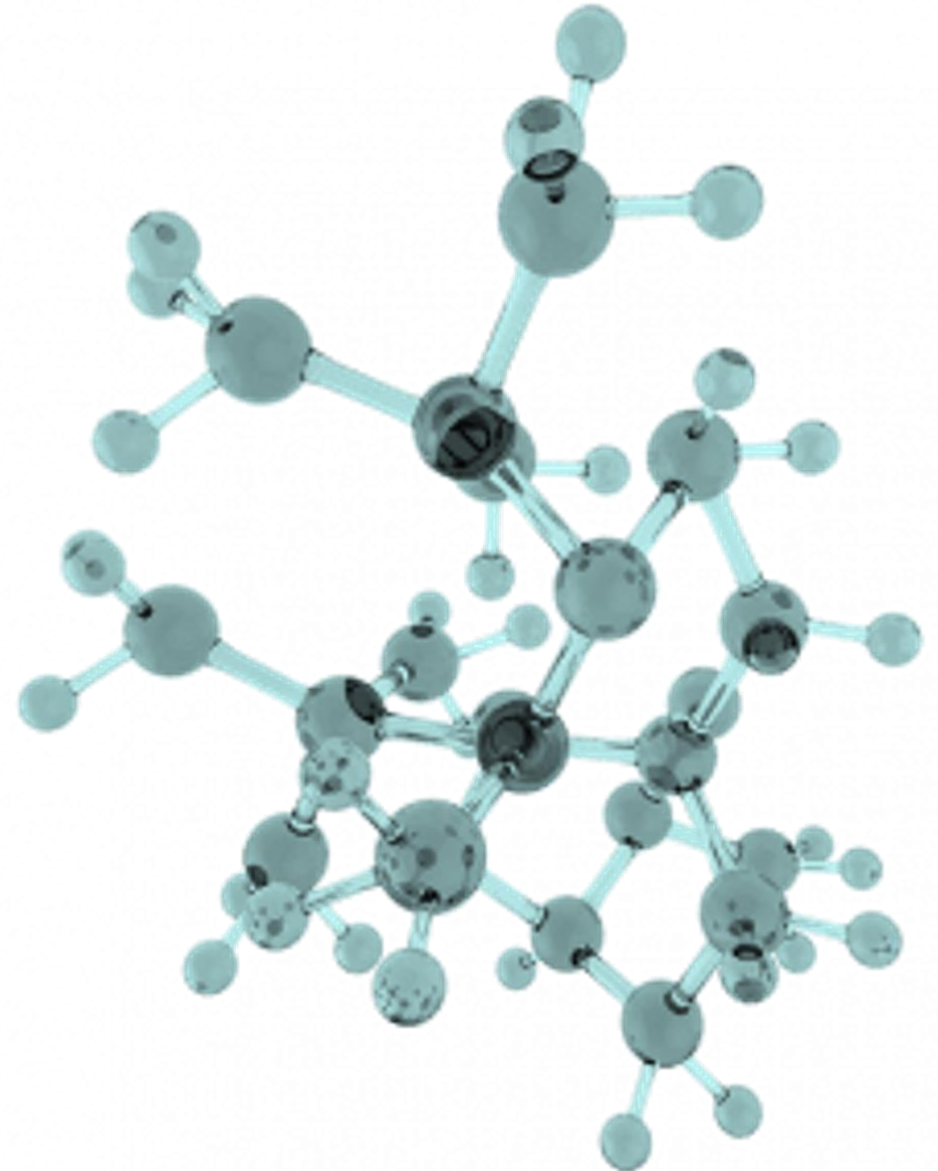


© MAYO FOUNDATION FOR MEDICAL EDUCATION AND RESEARCH. ALL RIGHTS RESERVED.

Enamel is the hard protective outer layer of teeth and is made of a mineral called **Hydroxyapatite**

There is **no better substitute** for enamel **than enamel itself**

What if we could regenerate enamel instead of sacrificing healthy tooth structure to make a restoration/prosthesis?



Caries management today

Predominantly reparative

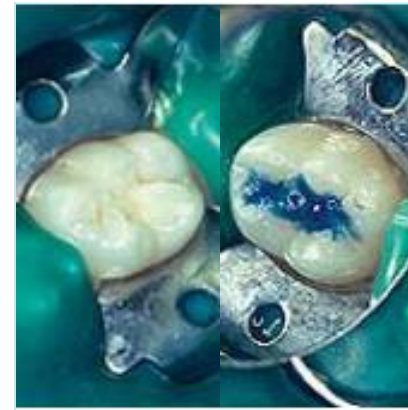
The current solutions:
#leaveit, #seal it, or #drillit

Leave it



- Monitoring and normal oral hygiene routine with fluoridated toothpastes (0.010-0.015%)
- Problem: Lack of in-depth remineralization (~30 μ)

Seal it



- Pit and fissure sealants
- Removal of incipient caries
- Etching of tooth
- Application of sealant to create a smooth tooth surface

Drill it



- Caries excavation, cavity preparation, followed by restoration.
- Problems:
- Increased tooth fracture risk due to removal of intact tooth structure
 - Marginal leakage
 - Secondary caries

Tooth enamel cannot regenerate naturally,
and there was no technology that could
regenerate enamel like Nature does.

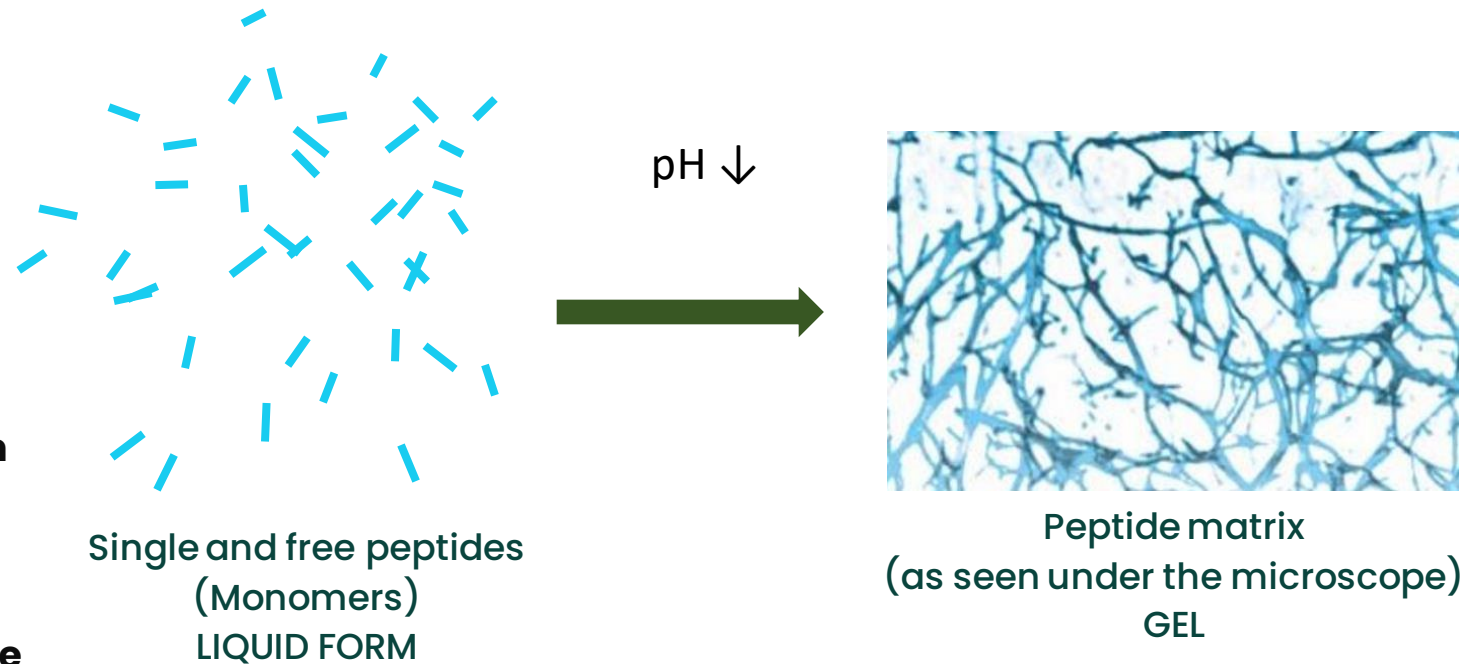
Until now.

Our unique solution

A short, smart **peptide** (called P11-4) composed of **natural amino acids***

Designed to have two properties:

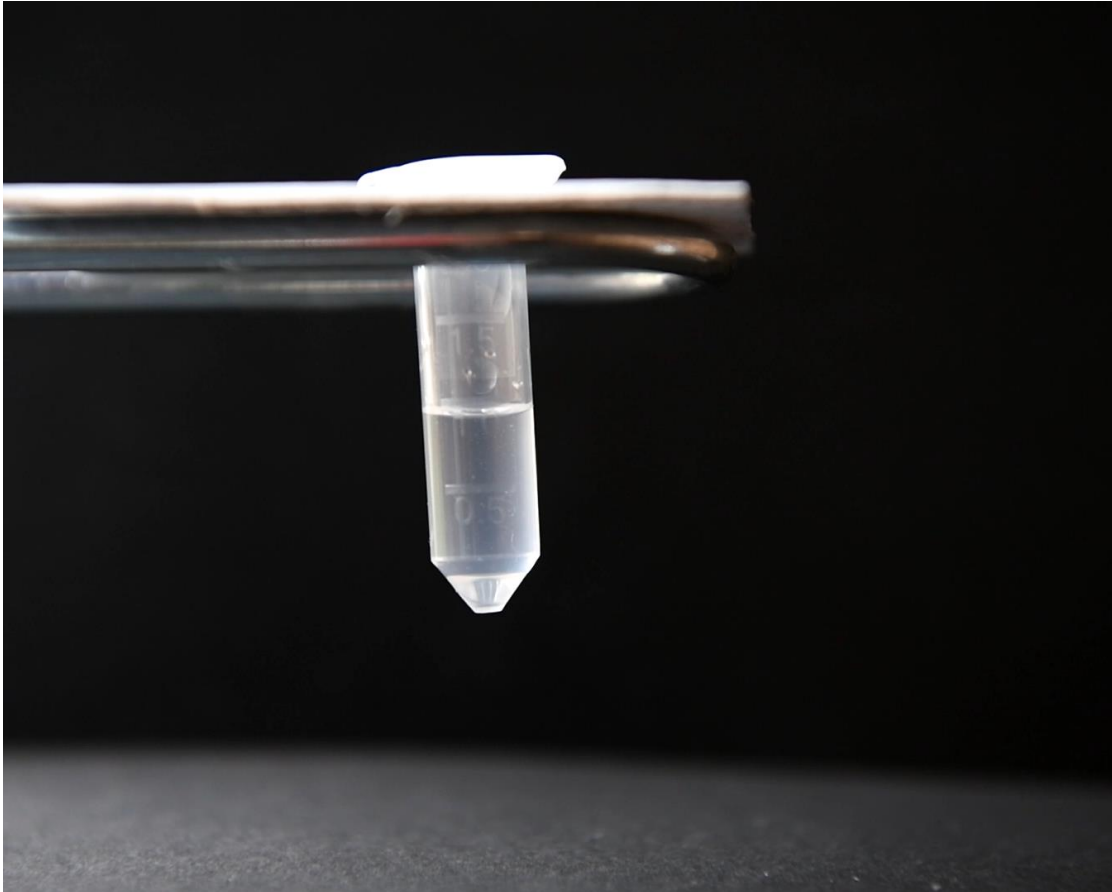
1. **Change conformation from liquid to gel in an acidic environment** (typical of the active carious lesion)
2. Proactively **attract calcium and phosphate to promote nucleation of new Hydroxyapatite** - in short, the creation of new enamel



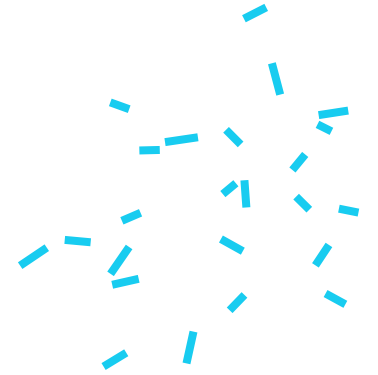
WHY IS IT IMPORTANT TO BECOME A GEL ONLY WHEN INSIDE THE LESION?
Because the gel will be trapped inside the lesion and create the right environment to generate new enamel over time

*Aminoacids are natural building block of our proteins/muscles

Step 1: Gelification of peptide



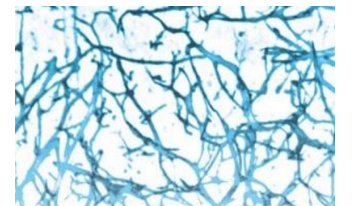
Single and free peptides
(Monomers)
LIQUID FORM



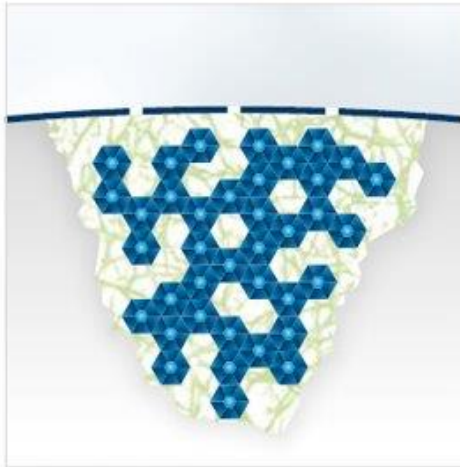
Recreate acidic
environment typical of a
cariou lesion
(add citric acid)

pH ↓

Peptide matrix
(as seen under the microscope)
GEL



Step 2: Formation of new hydroxyapatite crystals on the peptide matrix



t = 3-6 months

Biomatrix formed by Monomer-Peptide 10 4 technology attracts calcium and phosphate ions from saliva for de novo nucleation of hydroxyapatite crystals, leading to remineralization.



Training example



Curodont REPAIR

Clinical Practice
Application on a
smooth surface



Curodont REPAIR

Clinical Practice
Application on
Interproximal surface

CURODONT™ REPAIR





Guided enamel regeneration (GER) within early carious lesions

Curodont Repair is the first non-invasive biomimetic regenerative treatment for early caries.

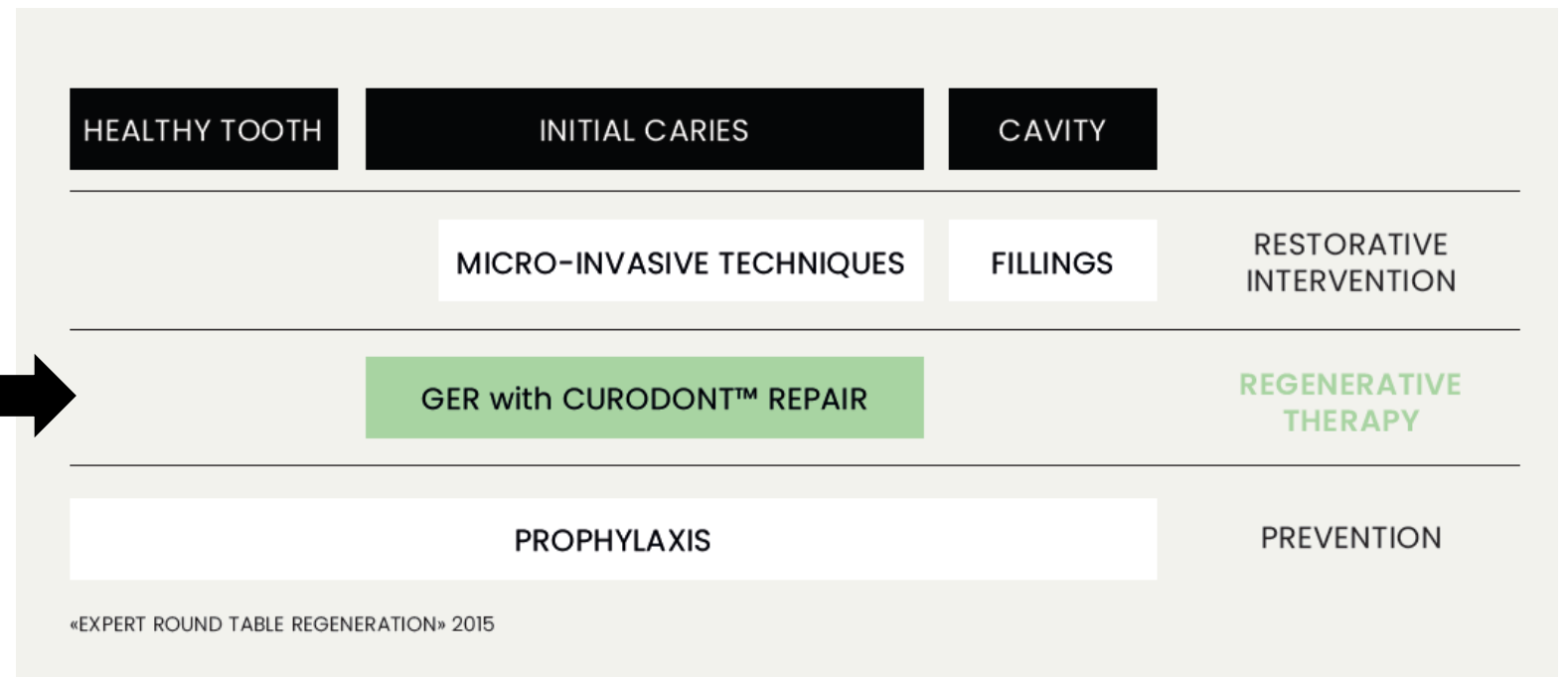
Who can apply it: Dentist, Hygienist

Indications: Early carious lesions ICDAS 1-3 (non-cavitated)

Patients: Children, Adults, including pregnant women

Time required: 5 minutes

WHEN TO APPLY CURODONT REPAIR?



Scientific and Clinical evidence



>200
Scientific
publications

86–100%
Clinical
success
rate.^{1,2,3,5,6}

13x
Probability
of success
with CR+FV
vs FV¹

Significantly greater decrease ($p < 0.001$) in white spot lesion sizes **within 3 months** of a **single application of CR** as compared to that of FV.^{3,4}

Regression of caries from lesion depth until the outer surface of enamel in active WSLs treated with CR as compared to FV ($p = 0.007$).⁵

The **combination of CR and home use of Curodont Protect** (with assembled peptide matrix) is as effective as CR+FV in **inactivating 100% of caries** as opposed to FV alone ($p < 0.05$).⁶

1. Alkilzy, M. et al. (2018) J Dent Res (97); (2018) 148
2. Brunton, PA, et al, (2013) Brit Dent J, 2013, 215: E6
3. Bröseler F, et al. Clin Oral Investig. 2020 Jan;24(1):123-132
4. Sedlakova Kondelova P. et al. Sci Rep 2020;10:20211
5. Welk A et al. Scientific Rep 2020;10:6819
6. Doberdoli D et al. Sci Rep. 2020 Mar 6;10(1):4195

Clinical trial: CareQuest, USA



CareQuest
Prof J. Horst
USA

- **Large scale clinical study**
- As of today, **12'030 teeth in 2'727 patients** were treated with Repair
- Authors of a new **Systematic Review & Meta analysis** just accepted for publication in JADA
- Educational webinar with Elevated Oral Care on "Guided Enamel Regeneration a non-invasive Therapy":
<https://www.youtube.com/watch?v=h6cAnrlwz7U>
- Explicatory video for Dental Practitioners:
<https://youtu.be/q7zkouOuX-0>

Clinical trial: School Denatal service in Chur, Switzerland

Dr D. Godenzi
Chur
Switzerland

- Retrospective study
- **225 patients**
- **>400 carious lesions**
- Publication currently under review

Curodont Repair Protocol



Material:

- NaOCl at 2% (*To remove the pellicle, can be done also with Airflow*)
- H₃PO₄ at 35% (*Etching*)

Applications needed: 1

(Subsequent applications can be made at the dentist's discretion).

No contraindication to use it in combination with fluoride varnish and CPP-ACP (dental mousse), applicable 5 minutes after using CURODONT REPAIR.

After the Oral Prophylaxis

01



Remove the pellicle:
Cleaning with 2% NaOCl for 20 sec.

02



Etching with H₃PO₄ at 35 for 20 sec.

03



Application of CURODONT REPAIR
and waiting for 5 min

Review patient after 3-6 months

CURODONT™ PROTECT



Caries and erosion protection in a single solution



CURODONT™ PROTECT

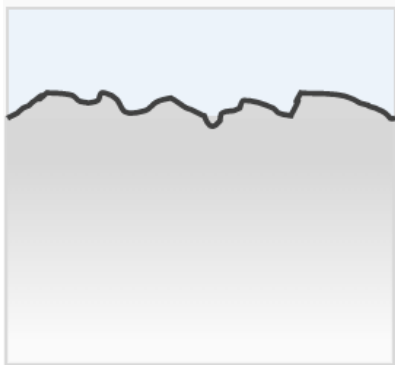
Form: gel containing the peptide, calcium, phosphate and fluoride.

Who can apply it: Dentist, Hygienist, home use

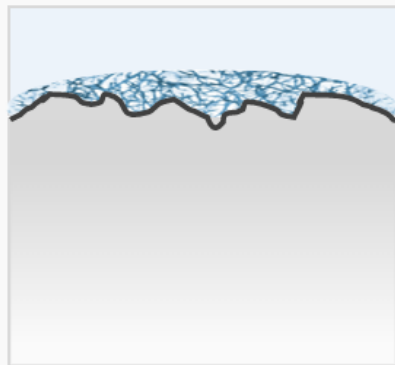
Indications: Prevention in general, erosion (acidic diets such as athletes or vegetarians), patients at high risk of caries including Children, pregnant women and Orthodontic patients (brackets or aligners).

Patients : Children, Adults, including pregnant women (no contraindications)

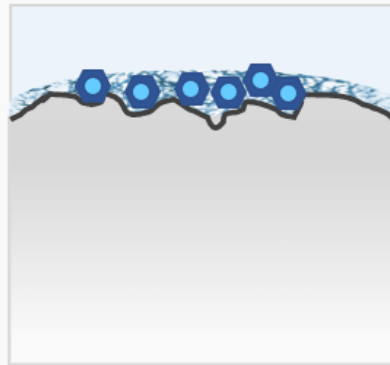
How to apply: At home use: 2X/week for 4 weeks (repeat after each visit). If used around orthodontic braces, best to use an interdental brush/micro-brush as applicator.



Enamel surface irregularities



Deposition of peptide matrix
in Curodont Protect

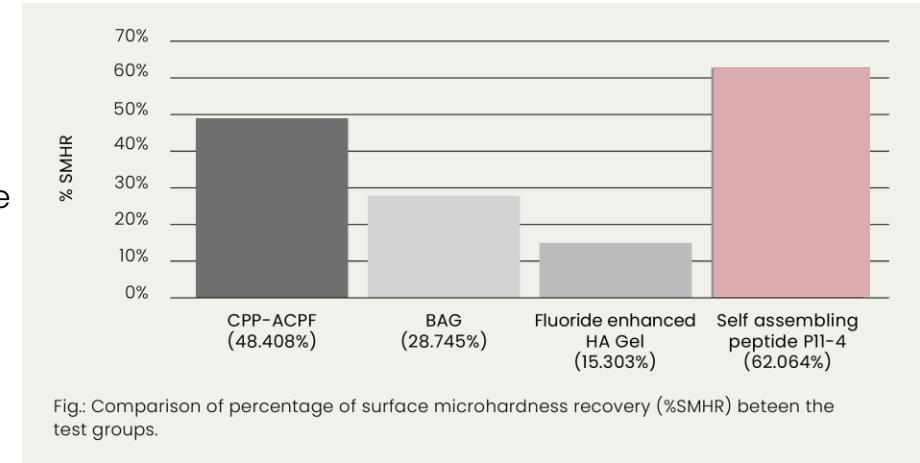


Deposition of hydroxyapatite
on the peptide matrix and
formation of a mineral-rich
protective layer

Scientific and Clinical evidence

01 Superior to fluoride varnish (22,600 ppm) in remineralising enamel around orthodontic brackets.¹

02 Higher recovery of microhardness (indicative of remineralisation) of enamel compared to bioactive glass (BAG), fluoride varnish, and casein phosphopeptide-amorphous calcium phosphate fluoride (CPP-ACPF).²



03 Greater protection from acid erosion as compared to the toothpaste with 1450 ppm of fluoride.³



A) SEM of enamel treated with tooth paste after acid exposure (pH 3, 1 h)
L: Intact enamel surface (not exposed)
R: Visible erosion despite the application of tooth paste (1450 ppm fluoride)

B) SEM of enamel guarded with CURODONT™ PROTECT after acid exposure (pH 3, 1 h)
L: Intact enamel surface (not exposed)
R: Intact enamel surface with CURODONT™ PROTECT protective layer

1. Jablonski-Momeni, A., et al. Sci Rep 9, 269 (2019)
2. Soares R et al. J Clin Diagn Res. 2017 Apr;11(4):ZC136-ZC141
3. Internal Report



CURODONT™ PROTECT

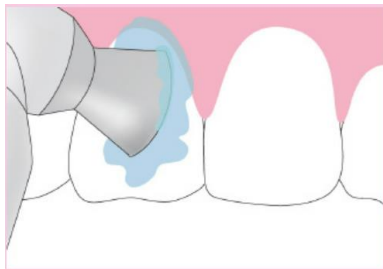
Method of application

IN THE
DENTAL OFFICE

Applied by the dental professional at the end of professional dental cleaning and/or bleaching and/or each orthodontic follow-up appointment.

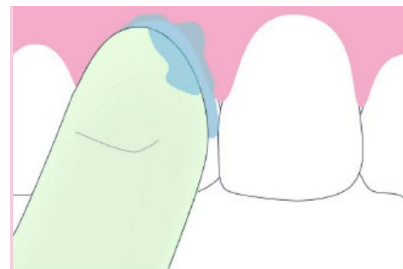
AT HOME

Application once or twice a week all over the tooth surfaces and/or around brackets after brushing.



Rubber polisher

or



Finger

or



Interdental Brush

Wait for



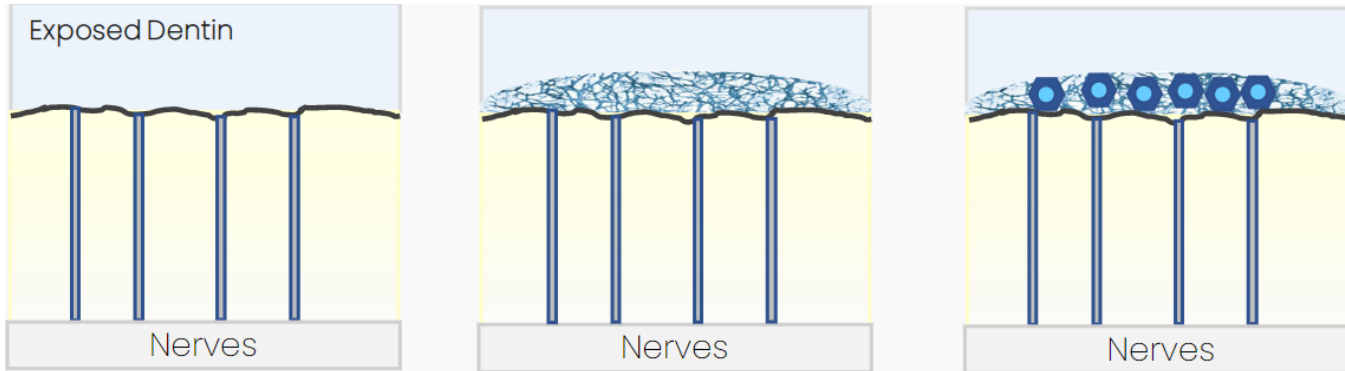
Spit out remnants, if needed.
Do not rinse.

CURODONT™ D' SENZ



CURODONT™ D'SENZ

Rapid and effective desensitization



Exposed dentin with open tubules

Rapid occlusion of open dentinal tubules by the peptide matrix

Deposition of hydroxyapatite crystals on the peptide matrix and formation of a mineral-rich protective layer



CURODONT™ D'SENZ

Form: gel containing the peptide, calcium, phosphate and fluoride.

Who can apply it: Dentist, Hygienist, home use

Indications : Dentinal sensitivity

Patients : Children, Adults, including pregnant (no contraindications), Periodontal Patients

Application : when needed

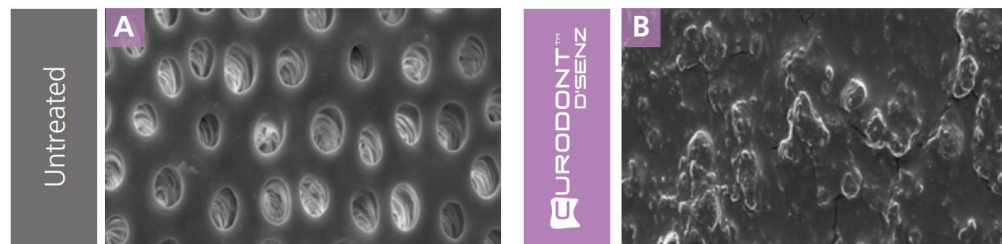
Scientific and clinical evidence



01 Reduced hypersensitivity and showed clear improvement in 80% of users.¹

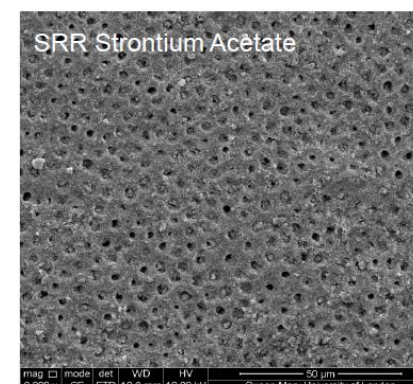
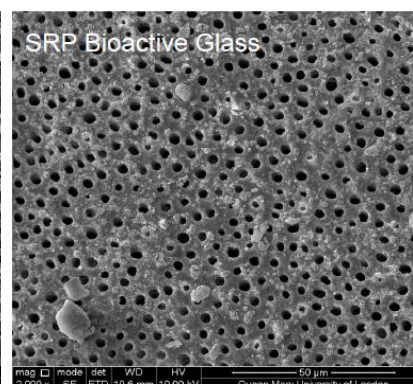
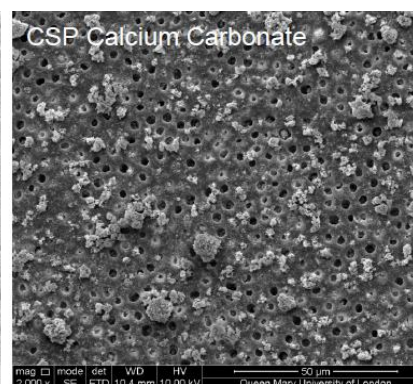
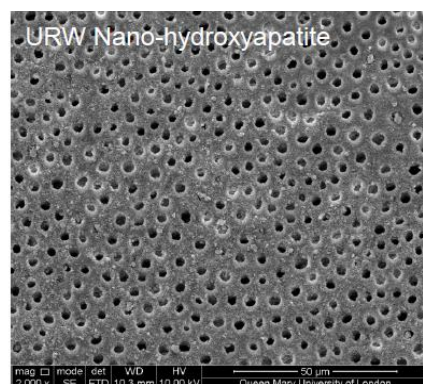
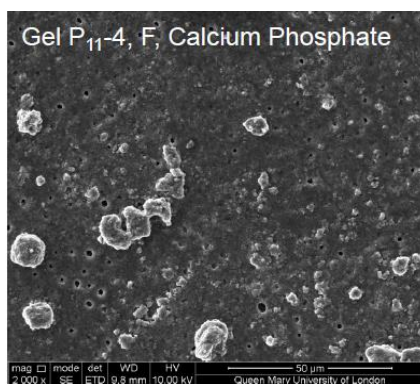
02 Noticeable improvement in pain within 3 days, which continues to improve over time.²

03 Demonstrated occlusion of dentinal tubules under SEM.¹



Exposed dentine with open tubule

Dentine with CURODONT™ D'SENZ – a stable protective barrier has formed after a single application



URW Nano-hydroxyapatite

CSP Calcium Carbonate

SRP Bioactive Glass

SRR Strontium Acetate

1. Hill R. et al (2020) J Dent Maxillofacial Res 3 (1) 1-11
2. Schlee M., et al. (2018). J Periodontol doi: 10.1002/JPER.17-0429



CURODONT™ D'SEZ

Method of application

IN THE DENTAL OFFICE

Applied by the dental professional before professional dental cleaning to desensitize teeth.

AT HOME

Applied directly to the sensitive areas once or several times a day for 1-2 min to desensitize, then spit.

01

Can be used 2 minutes **before an oral hygiene appointment** on sensitive teeth to make the appointment more bearable

02

Can be prescribed as **maintenance therapy** in patients undergoing periodontal **mucogingival surgeries**. Curodont D'Senz does not interfere with periodontal healing .

03

Easier-to-use and more bearable than brushing with anti-sensitivity toothpastes

04

Can be used **post peroxide-based bleaching** to manage the transient sensitivity

An intensive repetitive self-treatment by the patient leads to lasting desensitization.

vVARDIS Daily oral care

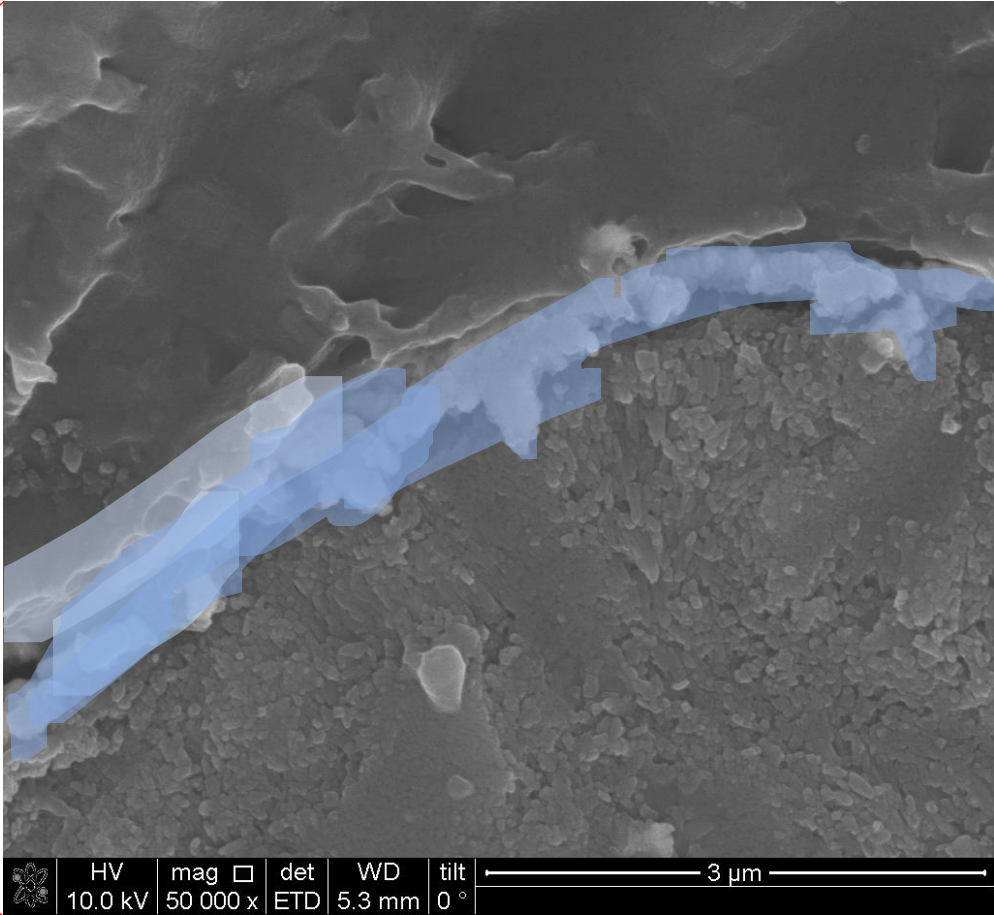
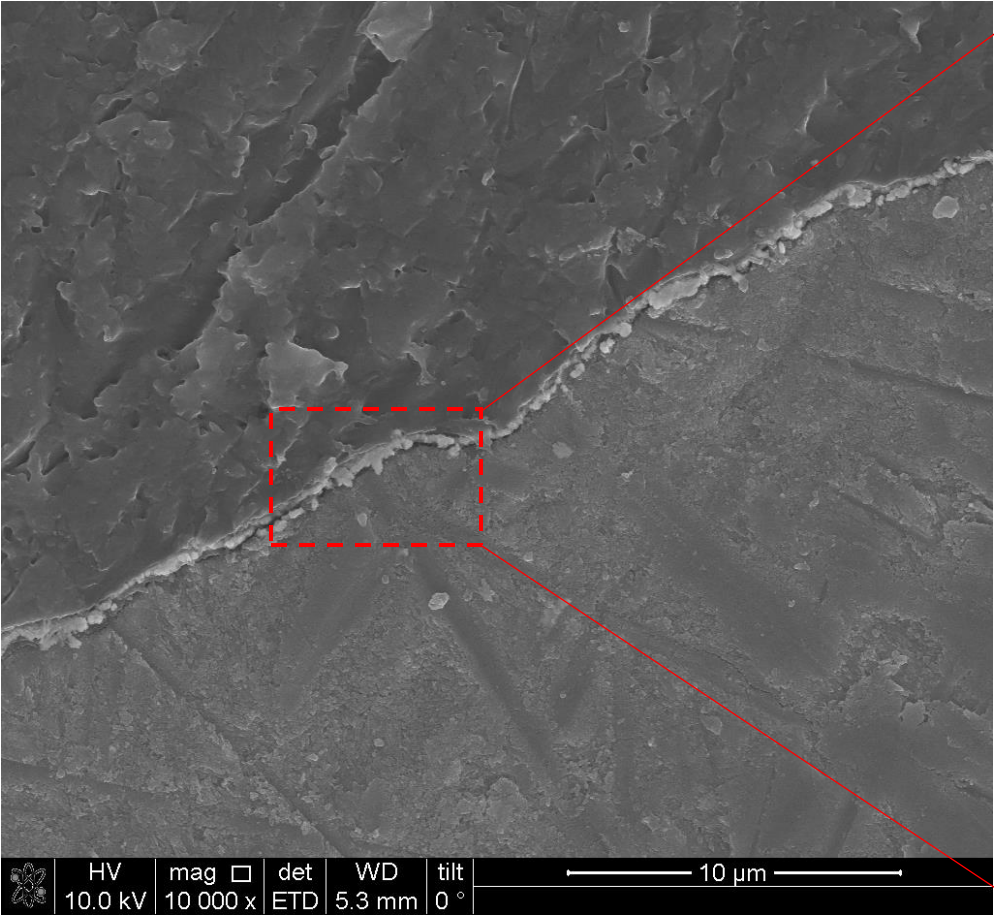


The White Enamel Serum

non-invasive and pain-free

The only formula able to stabilize and make HA adhere on/to the tooth surface.

Morphological investigation of natural human enamel after treatment with The CURODONT Serum. Cross sectioning* the tooth revealed a layer of serum on the enamel surface (highlighted in blue)



Embedding resin

Curodont Serum

Enamel



*A tooth cross section is a vertical cut that shows all the tooth building layers

HANDS ON TRAINING

Instructions



01



Brush teeth thoroughly before applying (preferably with Edelweiss Anti-Aging Toothpaste)

02



Apply a layer of the Aletsch serum around brackets

03



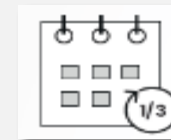
Leave the serum to air-dry for 10-15 second, making sure your lips or tongue do not wipe off the serum. No rinsing out, eating or drinking for the following 30 minutes.

04



Repeat the procedure every day till the bottle is empty.

05



Your Dentist will provide you the next treatment at your scheduled appointment

Recommendation is to repeat this application every 1-3 months, depending on desired results

White Enamel Anti-Aging Collection



New White Enamel
Anti-Aging Serum



Concentrated Hydroxya-Peptide 500 formula for a 1 week intensive treatment for creating new white enamel

New White Enamel
Anti-Aging Toothpaste



Hydroxya-Peptide 200 Formula for rejuvenating and whitening your enamel helping repairing, strengthening it day after day

Enamel Caressing
Wood Toothbrush



From sustainably sourced Swiss beechwood and engineered to **protect your new enamel**, gently cleaning without irritating sensitive teeth and gums

Enamel Highlighter
Mouthwash

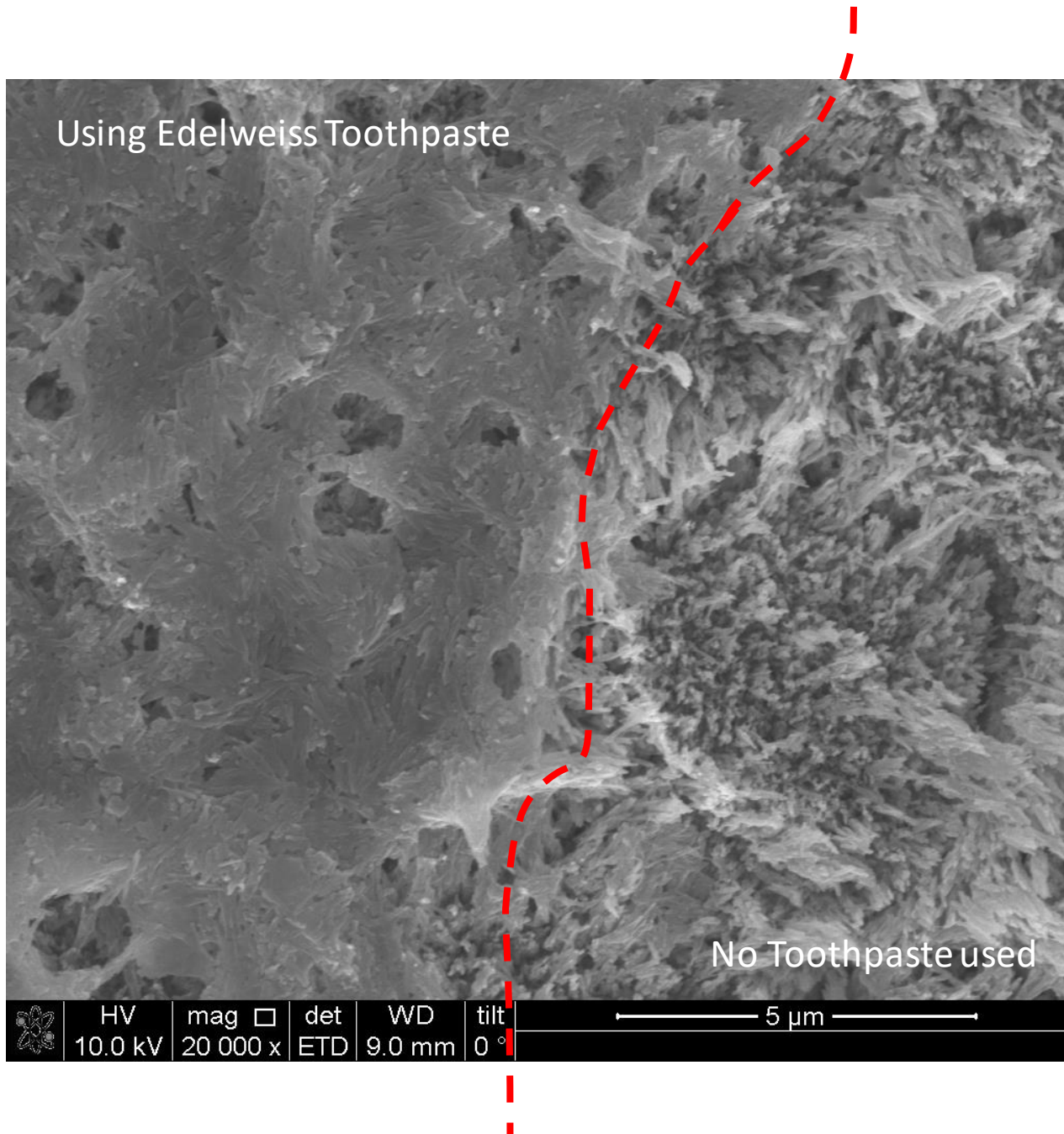


Zinc-Peptide 20 Formula that makes your teeth enamel bright and glossy and your breath fresh

Breath Highlighter
Mouth Spray



Zinc-Peptide 10 formula to instantly freshens and moisturizes your mouth, boosting your confidence for the closest encounters.



Morphological investigation of natural human enamel after brushing with The Edelweiss Toothpaste.

TOP View revealed a layer of the hydroxia-peptide on the enamel surface.



The vVARDIS Product Range

Treatment



LIQUID form
Monomer-Peptide technology
Treatment of early carious lesions
Includes CURODONT REPAIR

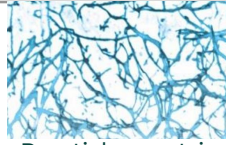


free peptides

Prevention



Gel (Matrix) form
Oligo-Peptide technology
Protection from caries, acid erosion, and sensitivity
Includes CURODONT PROTECT & D'SENZ



Peptide matrix

GEL/PASTE/LIQUID (Hydroxya-Peptide technology)

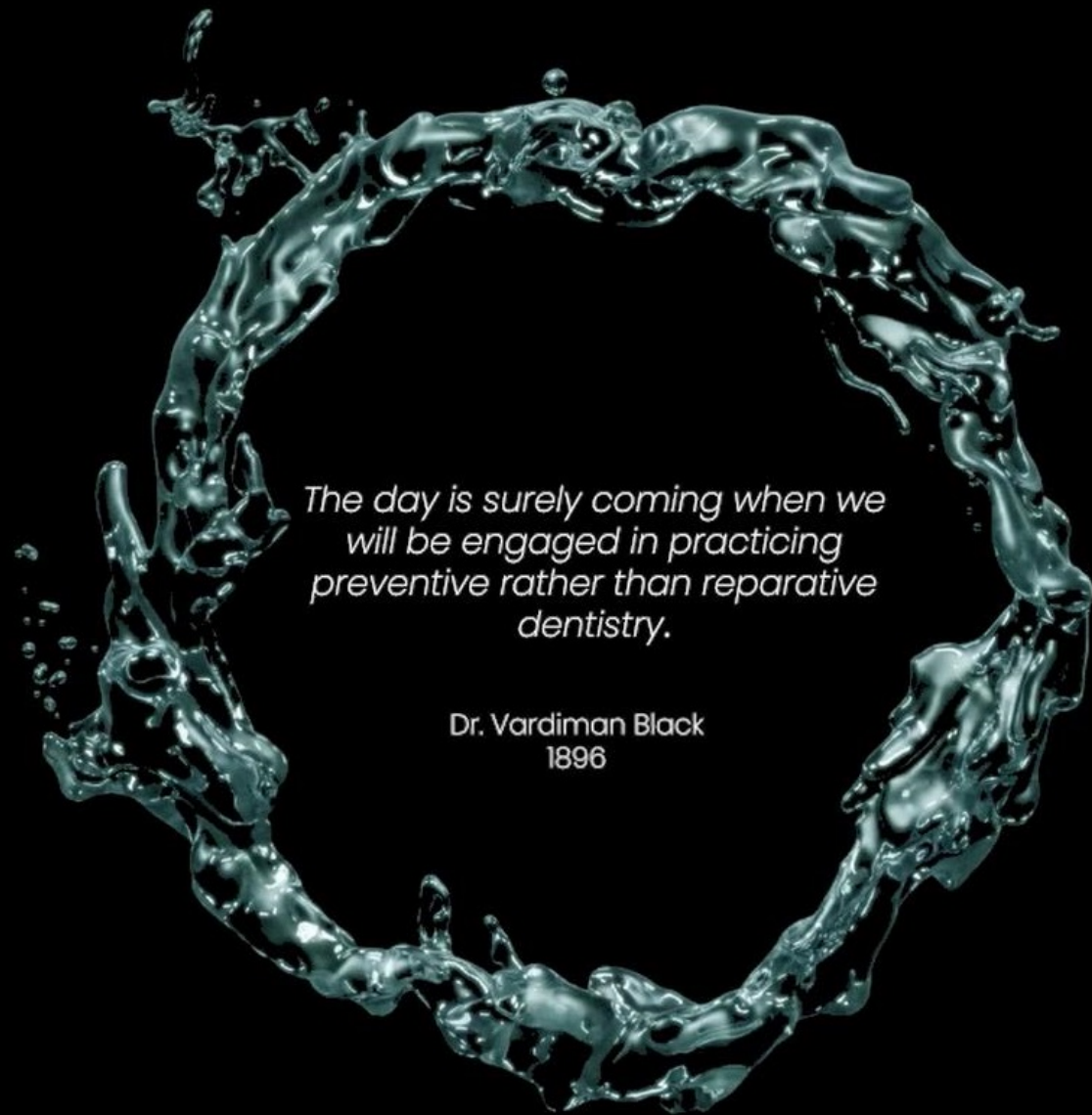


Daily rejuvenation, regeneration, and gentle whitening

Includes:

- White Enamel Anti-aging Serum (Aletsch)
- White Enamel Anti-aging toothpaste (Edelweiss)
- Enamel Highlighter mouthwash (Weissbad)
- Enamel Caressing toothbrush (Rheinholz)

Maintenance






*The day is surely coming when we
will be engaged in practicing
preventive rather than reparative
dentistry.*


Dr. Vardiman Black
1896

*For More Inquiries, Do Not Hesitate to Contact
the Authoritative Agent in Bahrain*

 **بي 1**
للتجارة والخدمات ذ.م.م.
TRADING & SERVICES W.L.L.

  +973 17 664521
 +966 138363283
  +973 388 27774
 +966 541833774

 info@b1group.me
www.b1group.me

 A'ali, Kingdom of Bahrain
Dammam, Saudi Arabia